

[REF] D2.12-2FC1 [REF] COT-2FC141

Rapid Response™ Saliva Drug Test (COT/THC)

DRUG SCREENING



The Rapid Response™ Saliva Drug Test (COT/THC) is a rapid, non-invasive drug screening solution that can simultaneously detect Marijuana (THC) and Cotinine (COT) in human oral fluid samples in a single cup.

The Rapid Response™ Saliva Drug Test (COT/THC) is intended for *in vitro* diagnostic use only.

- Kit Content**
- Individually packaged test devices
 - Oral fluid (saliva) collectors
 - Quick procedure guide
 - Security seal labels
 - Instructions for use

Details

Sample: Saliva
Format: Cup
Time-to-Result: 10 minutes
Storage Condition: 39-86°F/ 4-30°C
Test Principle: Lateral Flow Assay



Detects Cotinine (COT) and Marijuana (THC)

Simultaneously detects Marijuana (with a cut-off level of 40ng/mL) and Cotinine (with a cut-off level of 30 ng/mL).



One-Step Testing

In just 10 minutes, test patients from a single cup to assess drug levels and recent drug use.



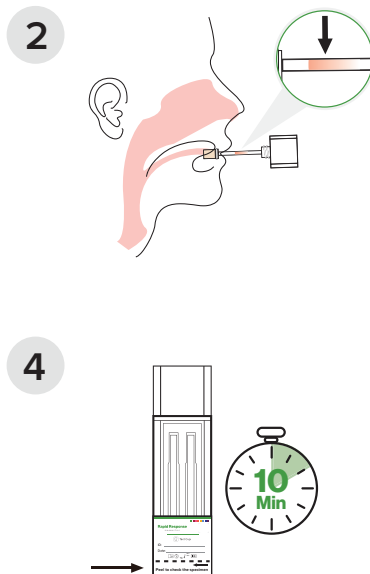
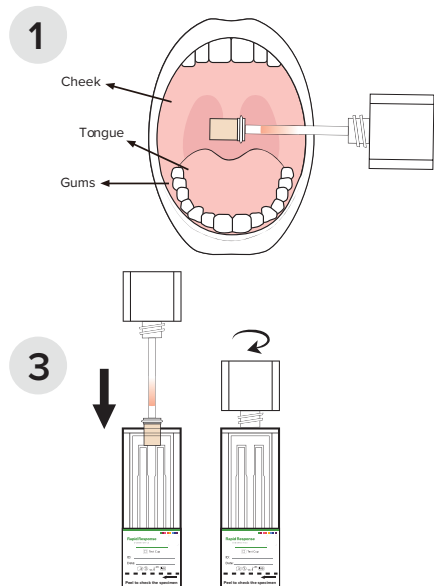
User-Friendly

Easy to administer and uses a non-invasive oral swab collector. Sample collection can be directly observed making it difficult to adulterate the sample.

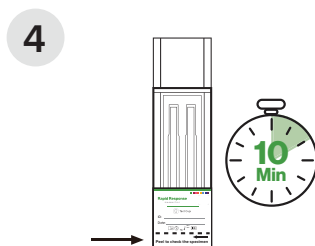
Rapid Response™ Saliva Drug Test



Testing Procedure



1. Insert the collection swab horizontally into the mouth. Sweep the inside of the mouth (cheek, gums, and tongue) using a circular motion.
2. Hold the swab in the mouth until color on the saturation indicator strip appears in the indicator window of the collection swab.
3. Remove the collection swab from the mouth. Insert the swab into the test device. Screw downward until the locking flange locks in place.
4. Read the results at 10 minutes.



These instructions are for illustrative purposes only. Please read the instructions supplied with the test before use.

Result Interpretation

Presumptive Positive



Only one colored band appears in the control region (C). No apparent colored band appears in the test region (T).

Negative



Two colored bands appear on the membrane. One band appears in the control region (C) and another band appears in the test region (T).

Invalid



Control band fails to appear. The result is invalid.

Ordering Information

Product Code	Product Name	CLIA Status
D2.12-2FC1	Rapid Response™ Saliva Drug Test (COT/THC)	CLIA Moderate
COT-2FC141	Rapid Response™ Saliva Drug Test (COT)	OTC /CLIA Waived

To learn more contact your local **Sales Representative**, call us at **+1 888 506-2658**, or email us at **info@lochnessmedical.com**